

# 신종 코로나바이러스감염증 예방 수칙

## 감염병 예방 수칙



손바닥, 손톱 밑  
비누로 꼼꼼하게 손씻기!



기침할 때  
옷소매로 가리기!



기침 등 호흡기증상자는  
반드시 마스크 착용  
(의료기관 방문 시 필수)



선별진료소\*(의료기관) 방문 시  
의료진에게 해외여행력 알리기

\*선별진료소 안내: 질병관리본부 홈페이지 확인,  
관할보건소 또는 지역번호+120, 1339 문의

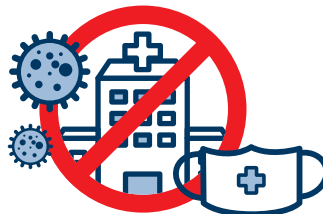


감염병이 의심될 때  
관할보건소 또는 1339,  
지역번호+120 상담

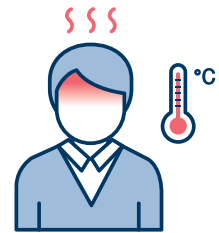
## 중국 여행 시 주의사항



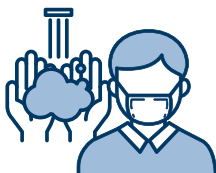
동물 접촉 금지



현지 시장 및 의료기관 방문 자제



발열, 호흡기증상자(기침, 인후통 등)  
접촉 금지



· 기침시 마스크 착용  
· 손씻기, 기침예절 등  
개인위생 수칙 준수



· 중국 여행 후 입국 시 건강상태질문서 제출  
· 귀국 후 발열과 호흡기 증상(기침, 인후통 등)  
발생 시 관할보건소 또는 1339,  
지역번호+120 상담

# Recommendations for preventing novel coronavirus infection

## Recommendations for preventing infectious diseases



**Wash your hands**  
**with soap and running water**  
especially your palms and  
under your fingernails



**Cover your mouth**  
**with your sleeve**  
when **coughing!**



If you experience  
**respiratory symptoms** such as cough,  
**must wear a mask**  
(mandatory when visiting health facilities)



**Inform medical staffs**  
**of your travel history**  
when visiting  
**selected clinics\*** (health facilities)



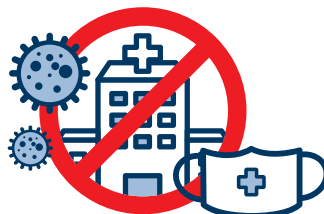
**Consult with your local public health center**  
**or call '1339' or 'Area Code +120'**  
if you are suspicious of **contract**  
**an infectious disease**

\*For more information on selected clinics : Check KCDC homepage,  
Call local Health centers or call at 1339 or your area code + 120

## Recommendations when travelling in China



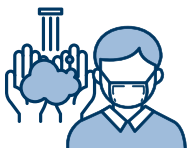
**Do not touch animals**



**Avoid visiting to local markets**  
**and health facilities**



**Do not contact with people**  
**who have a fever or respiratory symptoms**  
(coughing, sore throat, etc.)



- **Wear a mask when coughing**
  - **Cover your mouth with your sleeve when coughing**
- Comply with personal hygiene recommendations**



- **Report the health questionnaire upon arrival, after travelling in China**
- **If you have fever and respiratory symptoms (coughing, sore throat, etc.) after returning home, please consult with local center or call 1339 or area code +120**

# 新型冠状病毒疫情预防守则

## 传染病预防守则



用肥皂仔细清洗手掌、  
指甲缝!



咳嗽时  
用衣袖遮掩!



咳嗽等呼吸道症状者  
必佩戴口罩  
(进入医疗机构访问时,必须佩戴)



进入指定诊所\*(医疗机构)时,  
应告知医务人员近期的海外旅游史

\*指定医院查询: 在疾病管理本部官网上确认,  
并向所在地保健所咨询,或拨打1339、区号+120咨询



如疑似被感染,  
向所在地保健所咨询,  
或拨打1339、  
区号+120电话咨询

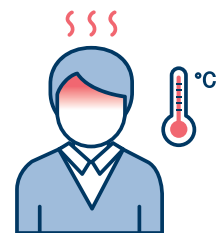
## 中国旅游注意事项



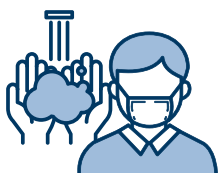
禁止接触动物



尽量不要到访当地市场及医疗机构



禁止接触有发热、  
呼吸道症状者 (咳嗽、因喉痛等)



• 咳嗽时佩戴口罩  
• 洗手、咳嗽礼仪等  
遵守个人卫生守则



• 前往中国旅行后入境时, 请提交健康状态调查表  
• 入境后,若发现发热和呼吸道症状 (咳嗽、咽喉痛等)时,  
向所在地保健所咨询,或拨打1339、区号+120电话咨询